

Upgrade CHIP-AZ Where CHIP-AZ Database (.mdb) is not in C:\CHIP2000 Folder

For users who have installed v8.0 release 8/10 or later.

[Get mde location](#)

[Get mdb location](#)

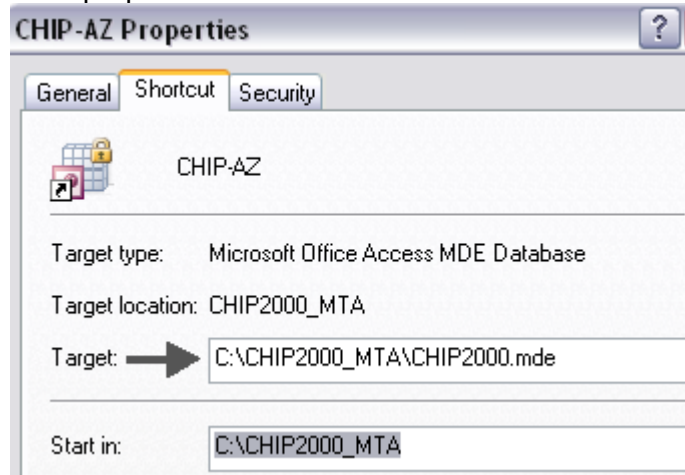
[Install the update](#)

[Re-link](#)

[Modifications](#)

1. Get the location of your CHIP-AZ Program file CHIP2000.mde

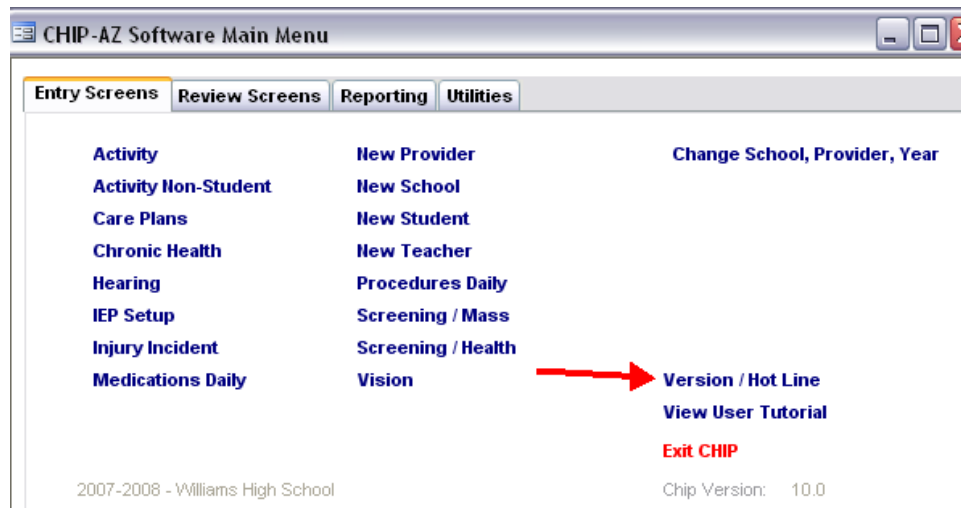
- Right click the desktop shortcut you use to open CHIP-AZ.
- Click properties.

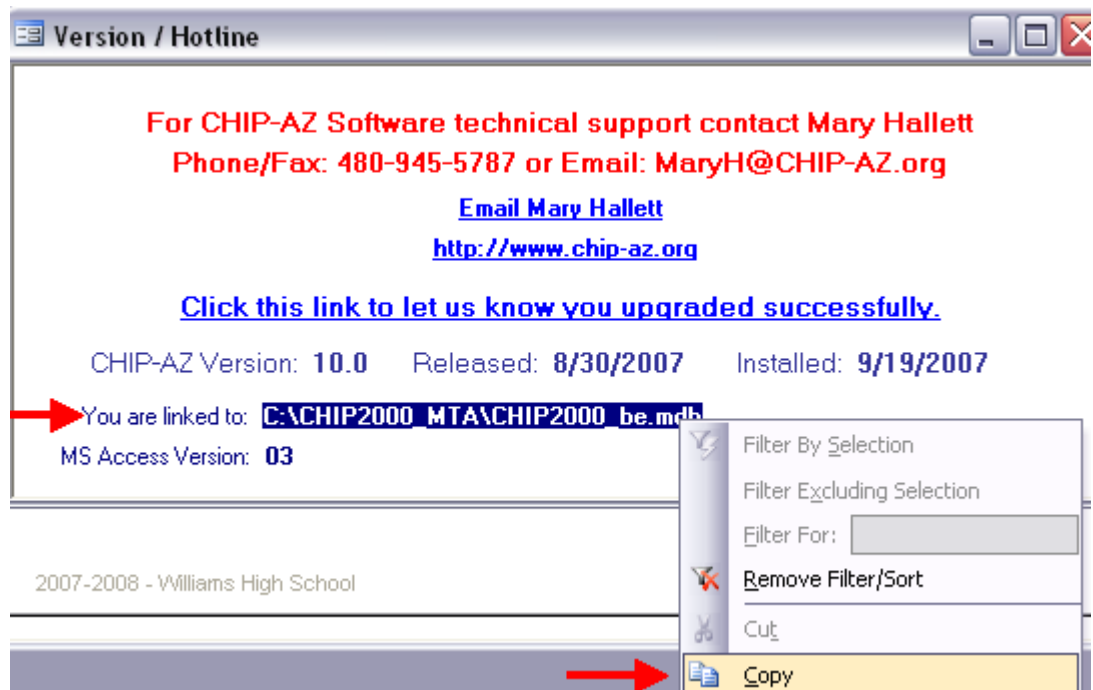


- Write down the target path **excluding** "\CHIP2000.mde".
- So it would be **C:\CHIP2000_MTA** in the above example.

2. Get location of .mdb

- Prior to upgrade**, open CHIP-AZ and go to Version/Hotline screen.

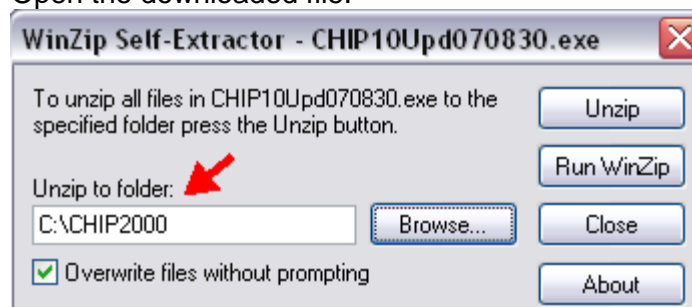




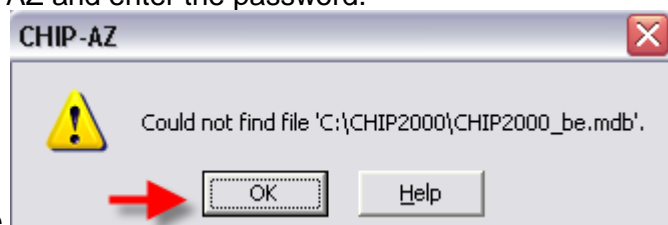
- b. Notice the information to the right of "You are linked to:"
- c. Highlight it
- d. With the mouse pointing at the highlighted information, Right click.
- e. Then left click **Copy** in the menu. [Do not interrupt the process by copying something else.]
- f. Close the screen and CHIP-AZ.

3. Install the update

- a. Download the update file from the CHIP-AZ web site.
- b. Open the downloaded file.



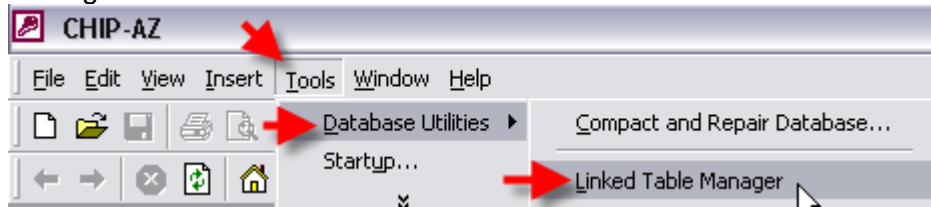
- c. Change the **Unzip to folder:** to the folder location you wrote down in step #1c above; **C:\CHIP2000_MTA**.
- d. Click Unzip to continue and follow the prompts. Close Winzip.
- e. Open CHIP-AZ and enter the password.



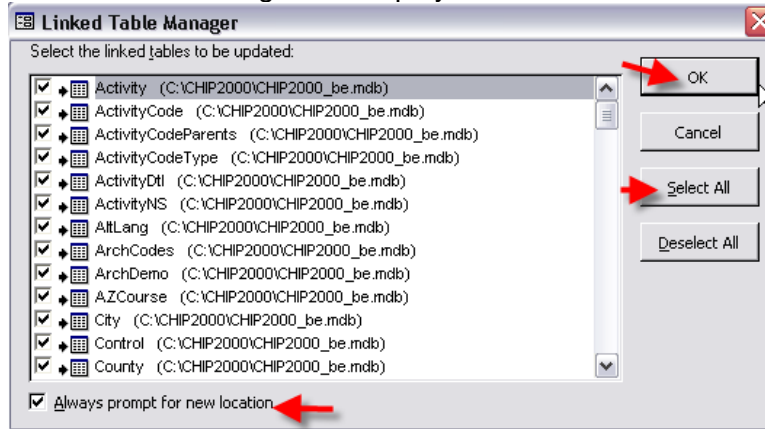
- f. You will see
- g. Click OK.

4. Re-link

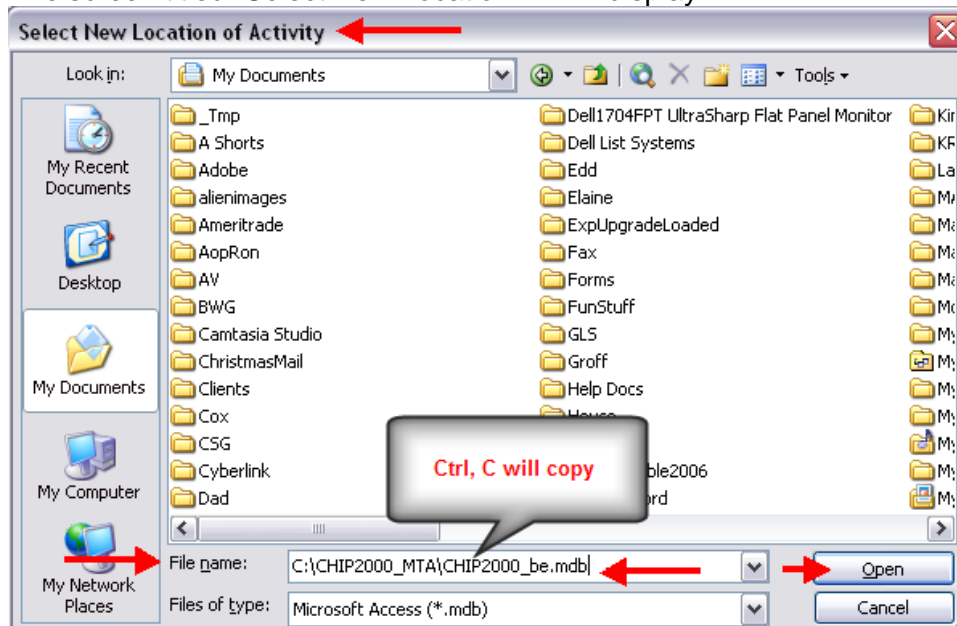
- a. Press the function key F11 on your keyboard.
- b. The CHIP2000" Database window will display.
- c. At the top of your screen, click Tools, Database Utilities, Linked Table Manager.



- d. Linked Table Manager will display.
- e. Linked Table Manager will display.



- f. Checkmark "Always prompt for new location"
- g. Click Select All button
- h. Click OK
- i. Click OK
- j. The screen titled "Select New Location..." will display.

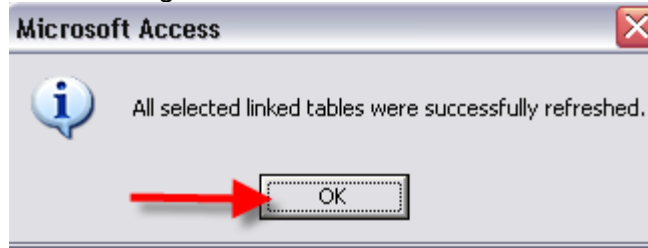


- k. Click in the **File name:** box.
- l. Click in the **File name:** box.
- m. Hold down the "Ctrl" key on your keyboard and type the letter "V".
- n. The "You are linked to:" information you copied earlier will display.
- o. Click the **Open** button.
- p. Re-Linking will begin.

- q. You will see a status meter in the lower left corner of your screen.



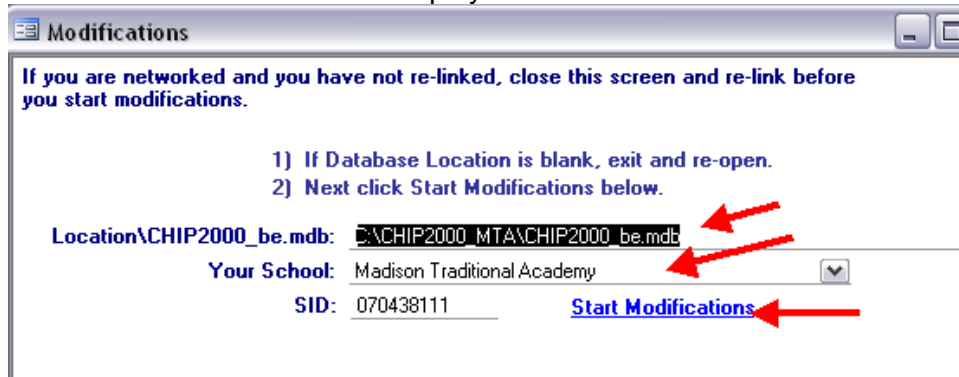
- r. Wait for the message below.



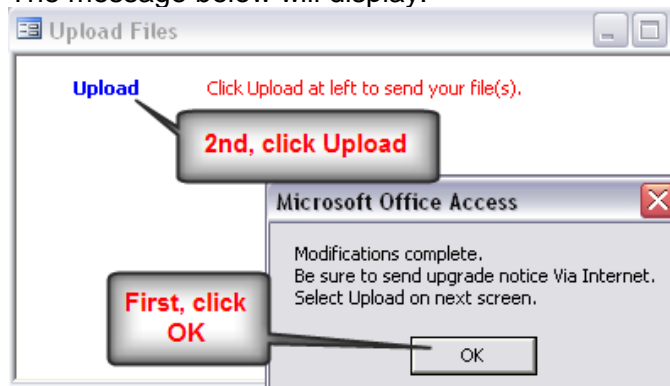
- i.
s. Click OK.
t. Close the Linked Table Manager.
u. Close CHIP-AZ and MS Access.

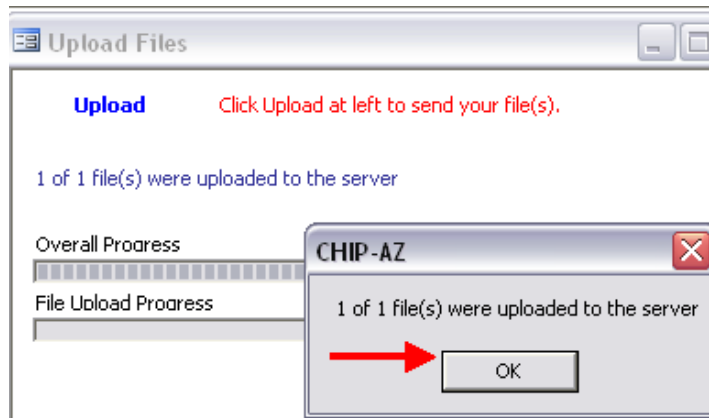
5. Modifications - Complete the Update

- a. Open CHIP-AZ.
b. Enter your password.
c. The Modifications screen will display.

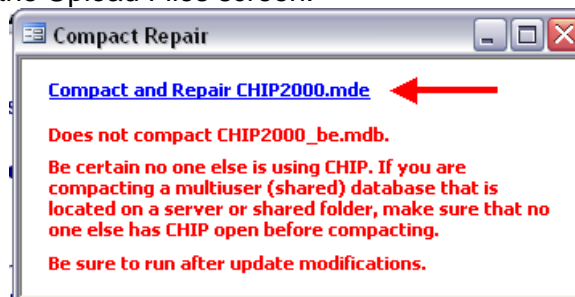


- d. Notice the Database (.mdb) Location field has your “You are linked to:” information you copied earlier.
e. **Your School:** should be correct.
f. If so, click **Start Modifications. Then Run Modification**
g. Then **Run Modifications**
h. The process takes awhile. Do not re-click.
i. Message Modifications complete will display. Click ok.
j. The message below will display.

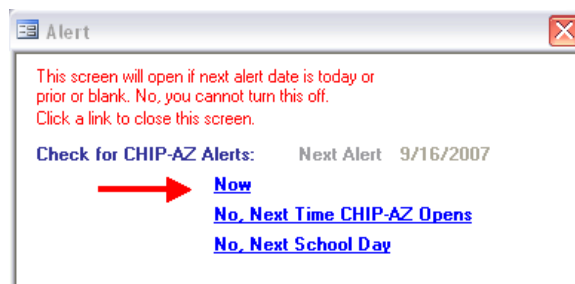




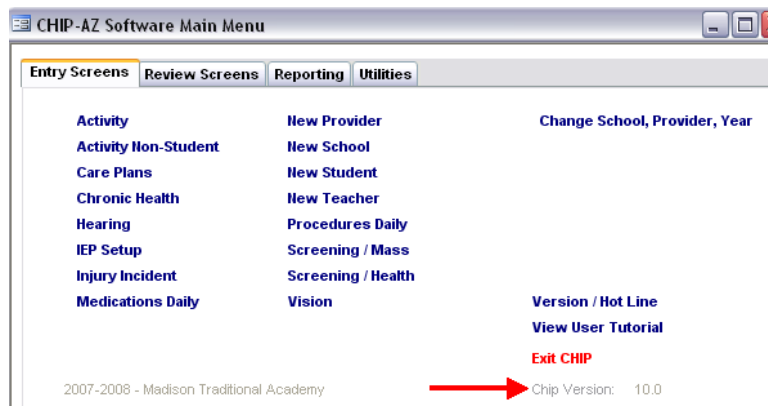
- k. Click OK.
- l. Close the Upload Files screen.



- m. Click Compact and Repair CHIP2000.mde



- n. Click Now to review Alerts.
- o. Close internet browser.



- p. Notice the **CHIP Version:**