

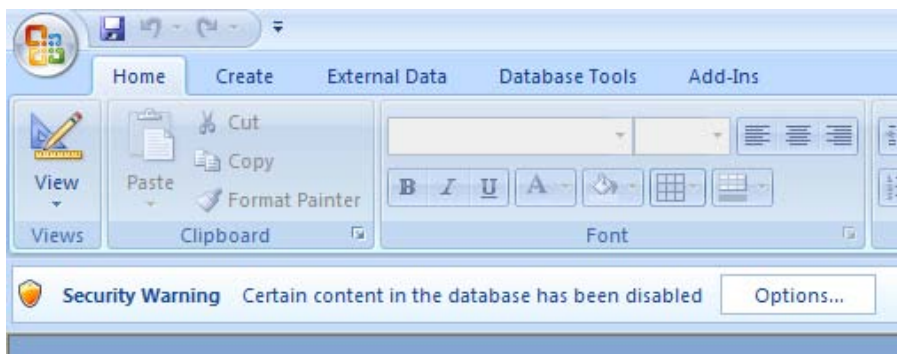
Table of Contents

Using CHIP-AZ with Microsoft Office Access 2007.....	1
Security Warnings	1
What to do?	2
Change Macro Settings	2
Trust The Database Permanently.....	4
Specify A Trusted Location.....	4
More Questions	7
2010	8
Change Macro Settings (2010).....	8

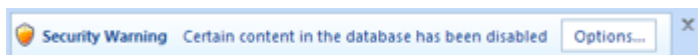
Using CHIP-AZ with Microsoft Office Access 2007

Security Warnings

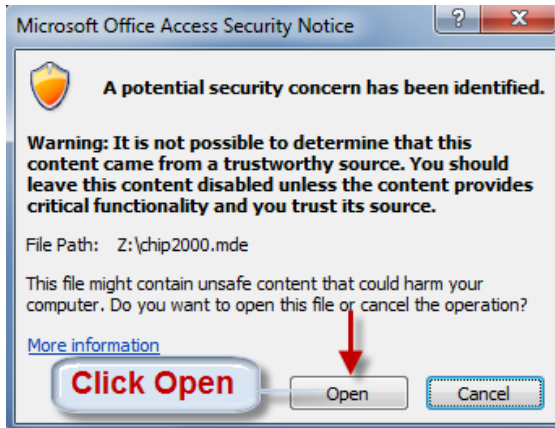
When opening CHIP-AZ for the first time using Microsoft Office Access 2007 you may see one or more security screens.



When Access disables content, it informs you of the action by displaying the Message Bar.



Or

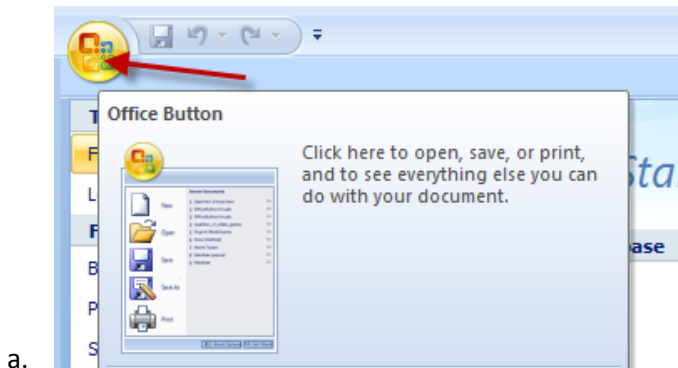


What to do?

If you see the Message Bar or the Microsoft Office Access Security Notice, you can choose set several options to trust the CHIP-AZ database.

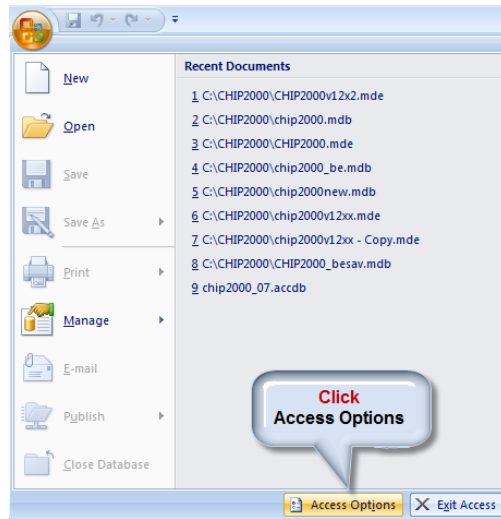
Change Macro Settings

1. Click Office Button.



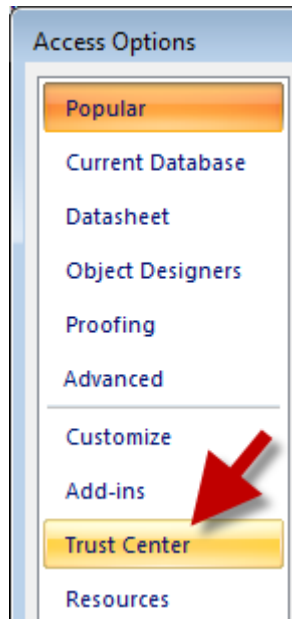
a.

2. Click Access Options



a.

3. Click Trust Center



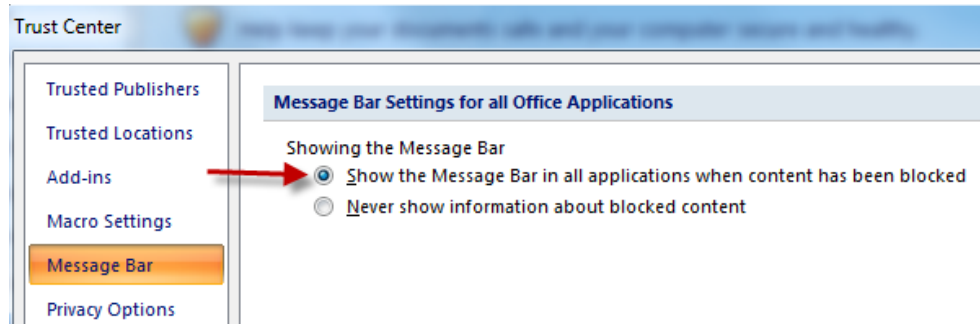
a.

4. Click Trust Center Settings

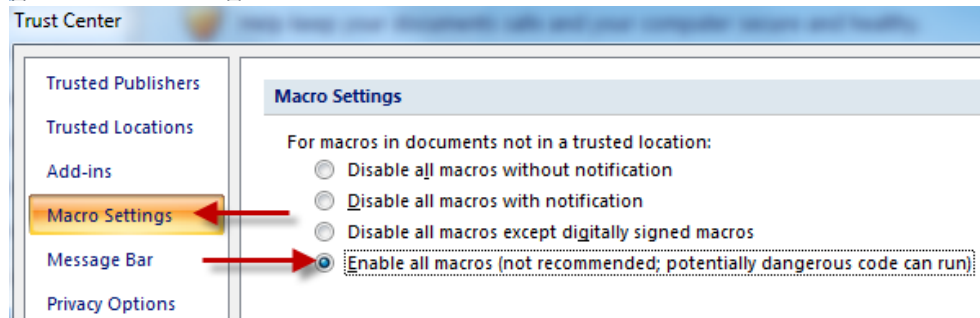


a.

b.



c.



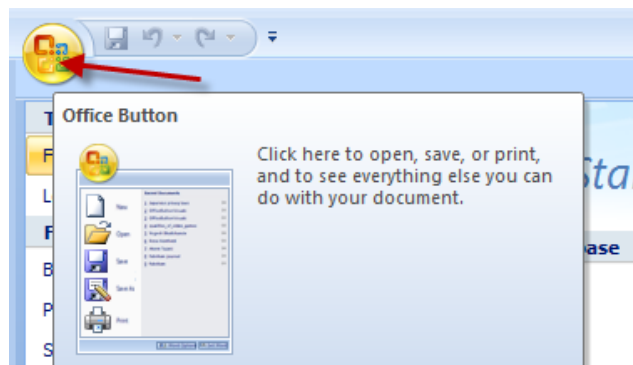
d.

e. Click OK, OK at bottom of screen.

Trust The Database Permanently Place the database in a trusted location — a folder on a drive or network that you mark as trusted. When you choose this option, you no longer see the Message Bar, and you never have to enable the database content as long as the database remains in the trusted location. *Note: By default CHIP-AZ is placed in the C:\CHIP2000 folder. Your installation may differ if you are networked. If networked use your location such as N:\CHIP2000 in place of C:\CHIP2000 in the steps below.*

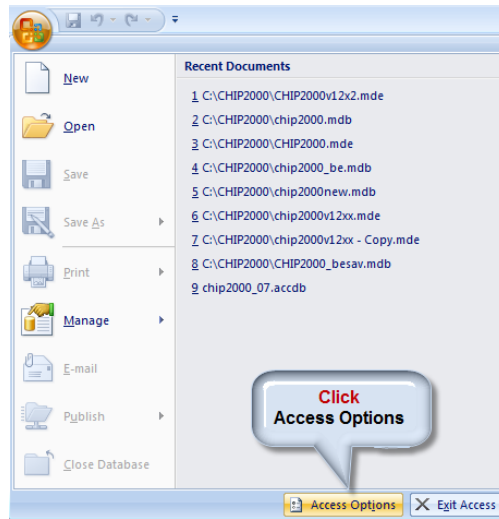
Specify A Trusted Location (Must Do This)

1. Click Cancel and close CHIP-AZ.
2. If not still open, open Microsoft Office Access 2007.
 - a. Start button, Microsoft Office Access 2007.
3. Click Office Button.



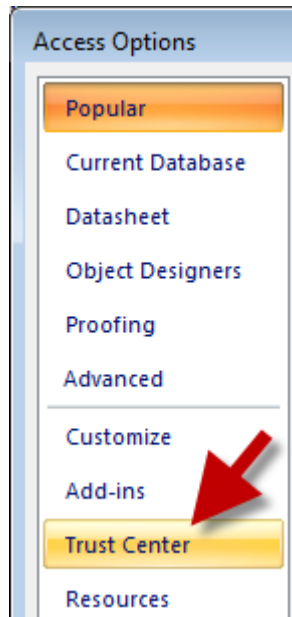
a.

4. Click Access Options



a.

5. Click Trust Center



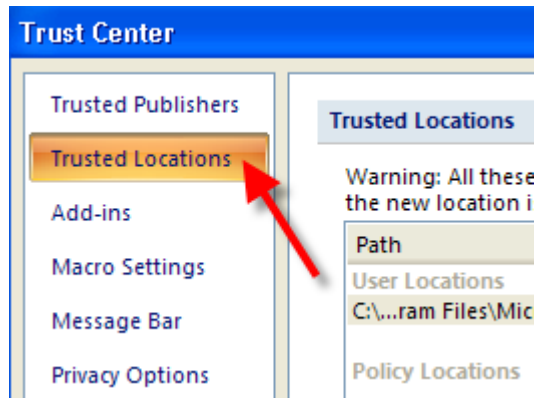
a.

6. Click Trust Center Settings



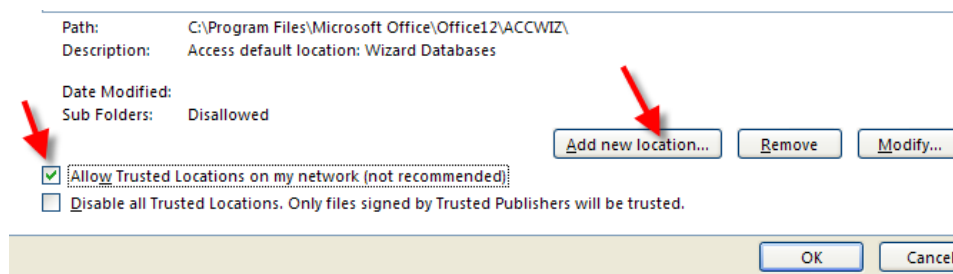
a.

7. In the left pane of the Trust Center dialog box, click Trusted Locations.

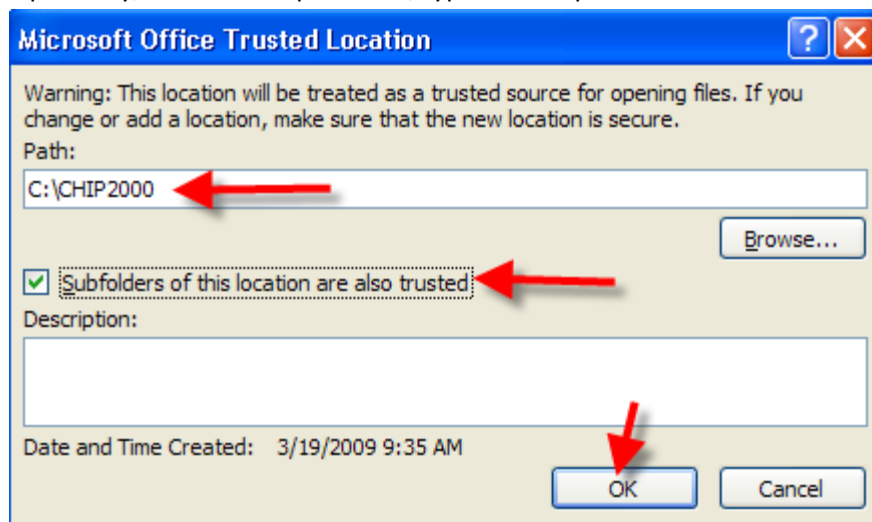


- a.
8. To add a network location, in the right pane, select the Allow Trusted Locations on my network check box. **Don't miss this step if networked!!**

- a. Click Add new location.



- b.
9. In the Microsoft Office Trusted Location dialog box, do one of the following:
 - a. In the Path box, type the full path of the location that you want to add. **C:\CHIP2000**
 - b. Or Click Browse to browse to the location **C:\CHIP2000** or your network location such as **N:\CHIP2000**
 - c. Select the **Subfolders of this location are also trusted** check box.
 - d. Optionally, in the Description box, type a description for the trusted location.



- e.
- f. Click OK several times and close Microsoft Access.
- g. Now open CHIP-AZ using your desktop shortcut.
 - i. You should not receive security messages.

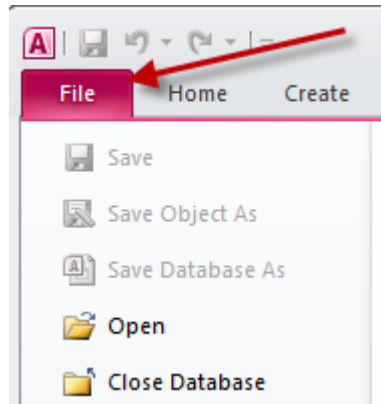
More Questions

1. I need to allow my application to run the VBA modules without the user being asked every time for permission. This used to be handled in **2003** by changing the security to Medium. How do I do this in **2007**?
 - a. They need to set the folder path your application lives in to be a trusted location or you can get a certificate so they can add you as a trusted publisher
Office button --> **Access** Options --> Trust Center -->
from here you have Trusted Publishers, Trusted location and you could also set macro security to always run code but that is the equivalent to the old "low" setting so make sure your security group signs off on this first.
2. The application has code that refreshes its links to a BE database when it starts. Now it asks for permission to link to every table every time it starts. How do I get around that?
 - a. I think this goes away once you have set your trusted locations properly.
3. I had set the startup options on my **2003** version to not display the Database window (along with other options like the Application icon). On **2007** it displays the database window on the left side of the main window. How do I stop that from happening and change my other startup settings?
 - a. This is now called the navigation pane and you can shut that off also.
Office button --> **Access** Options --> Current Database --> uncheck Display Navigation Pane

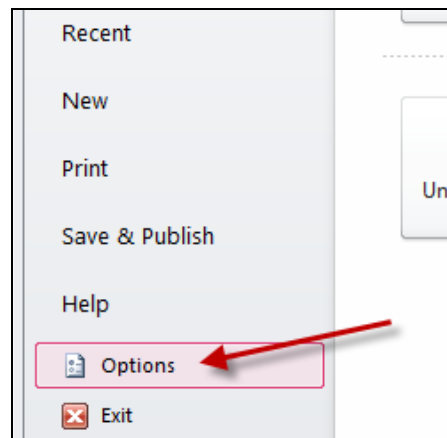
2010

Change Macro Settings (2010)

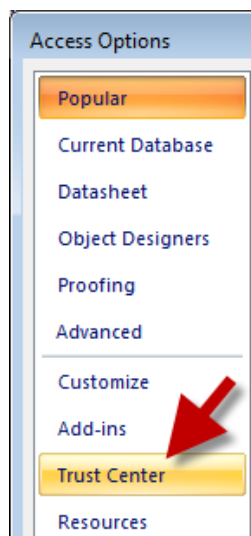
1. Open CHIP or Microsoft Access 2010.
2. Click File.



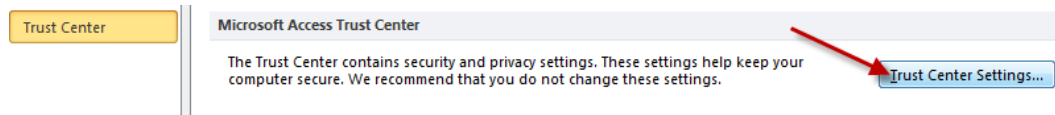
- a.
3. Click Options



- a.
4. Click Trust Center

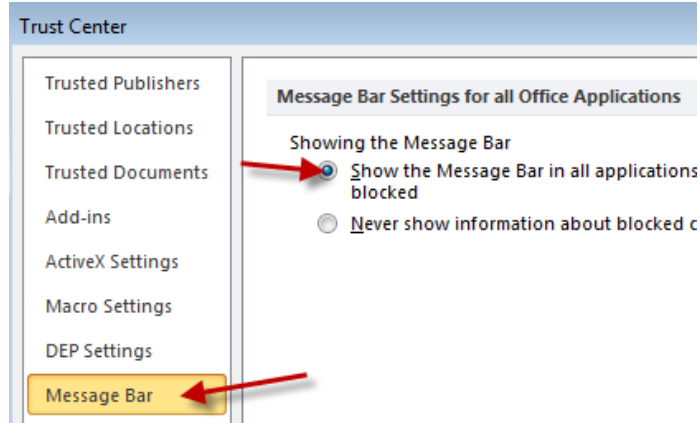


5. Click Trust Center Settings



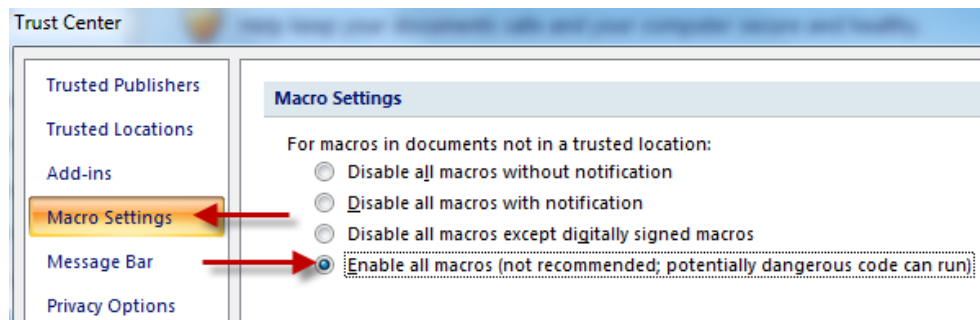
a.

6. Click Message Bar and Show...



a.

7. Click Macro Settings and Enable...



a.

8. Click OK, OK at bottom of screen to exit.