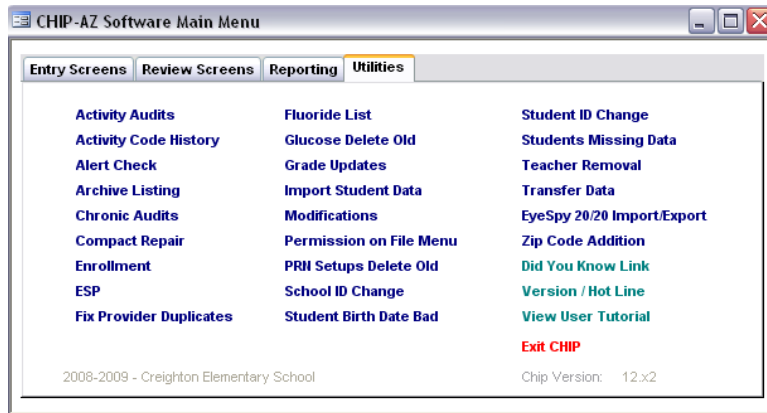


EyeSpy 20/20 CHIP-AZ Processing

Overview: CHIP-AZ has two primary capabilities relating to EyeSpy;

1. [Import](#) **Initial** screening Vision records from EyeSpy, translate values, validate and load into CHIP vision.
2. [Export](#) a list of currently enrolled students (along with their student id) to be imported into EyeSpy.
3. EyeSpy instructions may be found at <http://www.visionquest2020.org/tools-and-training/training-materials.html>
Select Import & Export Student Data.

CHIP-AZ Main Menu

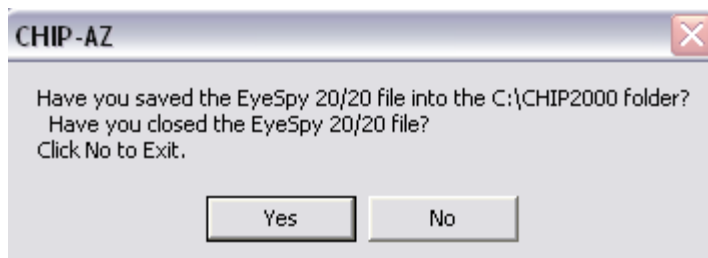


Import from EyeSpy

1. Create the EyeSpy 20/20 export file VQ4CHIP.csv using EyeSpy.
2. Copy the file VQ4CHIP.csv from the EyeSpy computer to the computer running CHIP-AZ. Be sure to place the file VQ4CHIP.csv in the C:\CHIP2000 folder.
3. Select EyeSpy 20/20 Import/Export from CHIP Utilities menu to display the following screen.



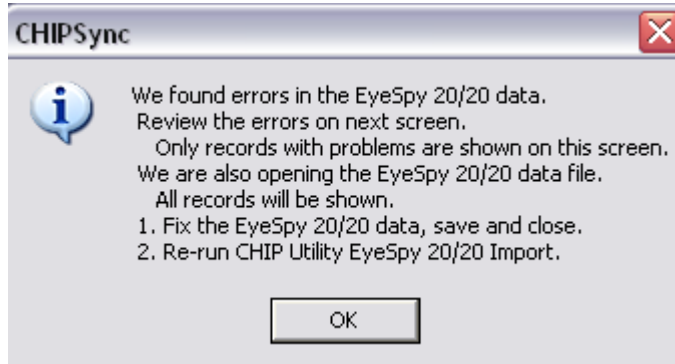
4. Click "Yes" to import records. Click "No" to proceed to the Export from CHIP-AZ.



EyeSpy 20/20 CHIP-AZ Processing

- Click "Yes" if you have performed the steps above.

If we found errors...



- The errors we found are displayed.
 - CTDS is blank or wrong for this school.
 - Initial screen already exists in CHIP.
 - ID does not exist in CHIP or is blank.
 - Screen date is prior to beginning date of this school year.

| errAny | errExists | CTDS | errCTDS | IDc | errID | Name | DOB | Date | errDate |
|--------|-------------------------------|-----------|---------|-------|------------------|------------------|-----------|-----------|---------|
| Y | | 070414110 | | 123 | Student Id not a | Amack, Tierra | 9/12/2002 | 2/25/2009 | |
| Y | Initial Screen already exists | 070414110 | | 10 | | Amack, Tierra | 9/12/2002 | 2/25/2009 | |
| Y | Initial Screen already exists | 070414110 | | 89198 | | Arambula, Israel | 5/19/2000 | 3/2/2009 | |
| Y | | 070414110 | | | Student Id not a | Barradaz, Karla | 4/24/2003 | 2/13/2009 | |
| Y | | 070414110 | | | Student Id not a | Bautista, Antho | 4/17/2003 | 2/5/2009 | |
| Y | | 070414110 | | | Student Id not a | Bautista, Antho | 4/17/2003 | 2/13/2009 | |

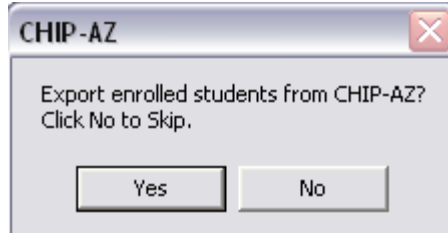
- The ES Export file, VQ4CHIP.csv is opened.

| | A | B | C | D | E | F | G | H | I | J | K | L | M |
|---|----------|-----------|-----------|----------|-----------|-------|--------|-------------|--|-------------------------------------|----------|------------|-----------|
| 1 | CTDS | Date | Last | First | DOB | ID | Result | Glasses | Both Eyes | Right Eye | Left Eye | Stereopsis | Right Eye |
| 2 | 70414110 | 2/25/2009 | Amack | Tierra | 9/12/2002 | 10 | FAIL | None | | | | pass | pass |
| 3 | 70414110 | 2/25/2009 | Amack | Tierra | 9/12/2002 | 123 | FAIL | None | Fail | PASS (20/ FAIL - slow response time | | | |
| 4 | 70414110 | 3/2/2009 | Arambula | Israel | 5/19/2000 | 89198 | FAIL | None | PASS (20/PASS (20/ FAIL (unable to see 20/32) | | | | |
| 5 | 70414110 | 2/13/2009 | Barradaz | Karla | 4/24/2003 | | FAIL | None | Verified Cc | FAIL (unable to see 20/40) | | | |
| 6 | 70414110 | 2/5/2009 | Bautista | Anthony | 4/17/2003 | | FAIL | Wearing | PASS (20/ FAIL (unable to see 20/40) | | | | |
| 7 | 70414110 | 2/13/2009 | Bautista | Anthony | 4/17/2003 | | PASS | Wearing | PASS (20/ PASS (20/ PASS (20/40 or better) | | | | |
| 8 | 70414110 | 2/5/2009 | Belmontes | Mauricio | 7/20/2003 | | PASS | Lost / Brok | PASS (20/ PASS (20/ PASS (20/ PASSED near test | | | | |

- User may correct entries in ES, re-export and re-process in CHIP.
- User may correct entries in ES export file and re-process in CHIP.

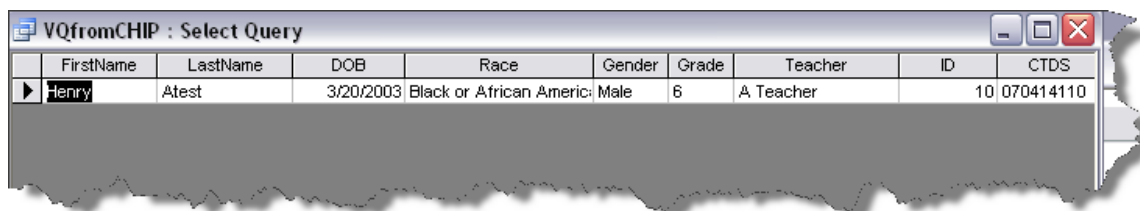
EyeSpy 20/20 CHIP-AZ Processing

Export from CHIP-AZ

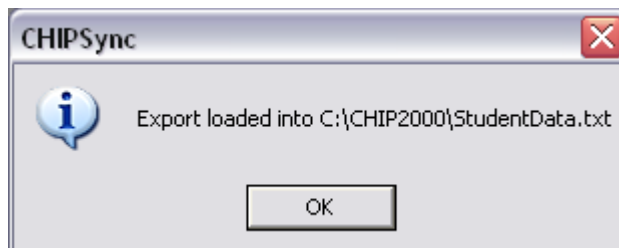


1. Click "Yes" to export.

Exported records are displayed.



2. Close the query.



3. Click "OK" to close the message box.
4. Copy the file StudentData.txt from the C:\CHIP2000 folder to the EyeSpy computer and follow your EyeSpy instructions.
5. EyeSpy instructions may be found at <http://www.visionquest2020.org/tools-and-training/training-materials.html> Select Import & Export Student Data.